

About 350 of the 44 ton diesels were manufactured by the General Electric Co. and 48 of these were made for the Pennsy Railroad. The rest found homes on other railroads or for various industrial switching chores. Their capacity was about 5 or 6 cars.

1. BODY PREPARATION - The space between the front end steps must be widened to allow the coupler support to pass when we later install the power unit. File or cut both inside step edges about $1/32$ " to enlarge the opening to $3/8$ " width.

If you intend to install working headlights, drill both headlight openings with the proper size drill to accommodate your bulbs.

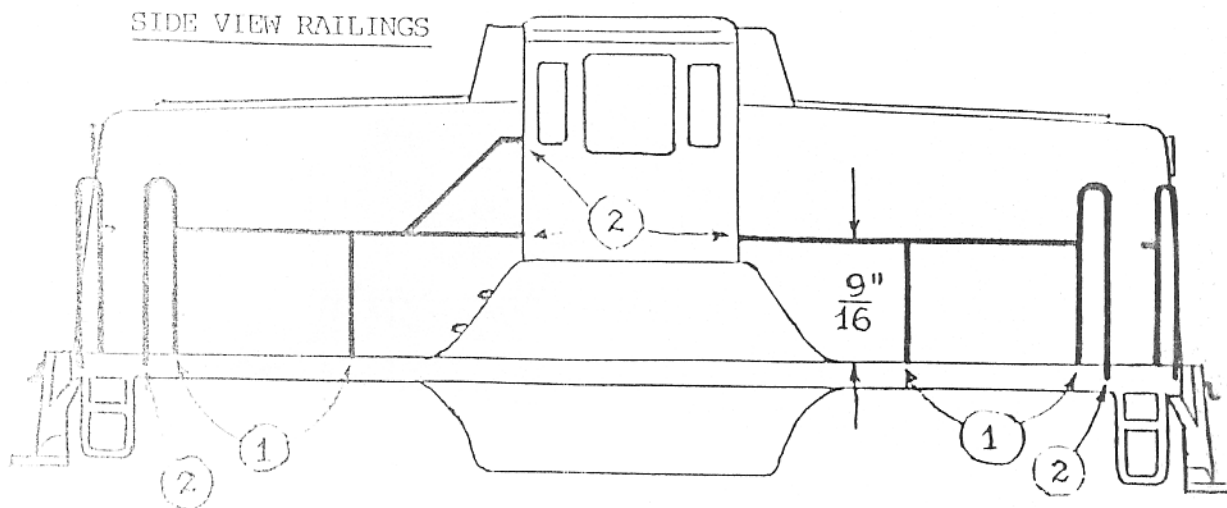
Next, using a #66 drill in a hand held pin vice, drill holes clear through the body where the handrails and posts are anchored. The vertical holes are marked (1) and the horizontal holes (2). Notice that the "U" shaped end posts are anchored both vertically and horizontally. The upright post holes and those into the cab should be about $1/16$ " in from the walkway and cab edge.

2. SIDE RAILINGS - Using the full scale drawing, measure and cut the posts and railings from the .033 brass wire provided. Don't forget to allow enough to insert into the drilled holes. Posts should be $9/16$ " in height. Wire that extends through the plastic body into the motor frame cavity must be trimmed flush or your chassis won't fit in place.

Cut eight pieces about $2\ 1/16$ " long to make the "U" shaped posts. If you have trouble shaping the "U", try bending around a small nail. When you insert them vertically, you can see where to bend the other leg to fit into the horizontal hole. The top should extend about $1/4$ " above the railing.

Complete posts and railings on both sides of the body. Keep even and vertical. Super Glue posts and railings where they enter the body. Solder the parts that touch. A dab of Duco or other fast drying cement will work, but solder is best.

3. FRONT RAILINGS - Drill the #66 holes into the walkway and hood as before. Remember the (1)'s are vertical, the (2)'s



Do this on both sides of the plastic body. See full size drawings. Notice that both sides are identical and the diagonal railing anchoring in the left side of the cab is also on the left side where the cab steps are located on the opposite side of the loco.

are horizontal. On the ends, a brace goes from the "U" shaped post into the hood, and across from post to post. Drill four #75 holes where shown to mount grab irons on each end.

4. WINDOWS - Using the clear plastic supp-

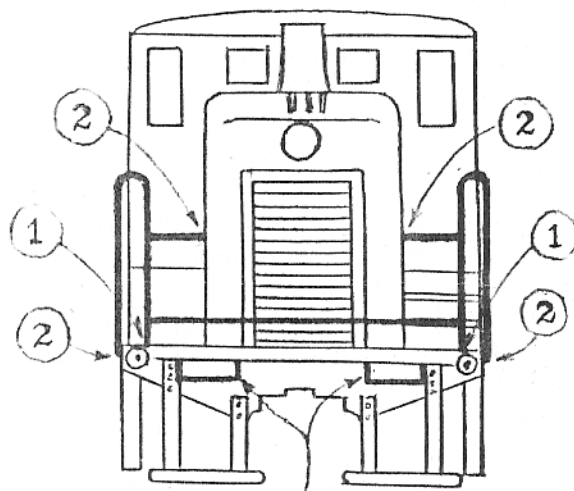
lied, cut and fit pieces behind the windows. Be sure the plastic clears and doesn't interfere with the chassis. Super Glue in place.

5. ASSEMBLY - Paint the body, railings, wheels, and the truck side frames. The Pennsy was all Brunswick Green. Insert the chassis into the body. Fasten with a self tapping screw in each end of the frame and mount the Kadee couplers on the coupler supports. Decals can be applied and your diesel should be ready to roll.

44 TON DIESEL
PARTS LIST

1. - Complete chassis ready to insert
2. - Plastic body
3. - 1" x 5" clear plastic for windows
4. - 1 pr. #802 Kadee couplers
5. - 2 self tapping screws (frame mount)
6. - Four 12" lengths of .033 brass wire
7. - Four Grab irons

END VIEW RAILINGS



Grab Irons
Both Ends

